



# **12<sup>th</sup> International Geography Olympiad**

## **FIELDWORK EXERCISE 1 Task 1.2**

**Student number**

1	2				
---	---	--	--	--	--

**Tver 2015**

**TIME LIMIT 30 MINUTES. 4 MARKS MAXIMUM**

You are now just below Point B on the side of the Starchonka (Verkhnyaya Staritsa) river valley. Identify and explain the most common uses of the quarried rock that can be seen at the outcrop on the other side of the valley (west-southwest from you) by doing the following:

- using the template (1.2.1), draw a cross-section (profile) of the Starchonka river valley along the A-B line shown on the map provided in Fig.1,
- identify the rock (1.2.2) using drilling data from site A (Table.1),
- describe known uses of the rock identified in the table provided (1.2.3).

**HINTS&TIPS**

- To make sure you identify the correct outcrop, use your compasses.
- The vertical scale at the template 1.2.1 shows absolute height in metres.

Fig.1

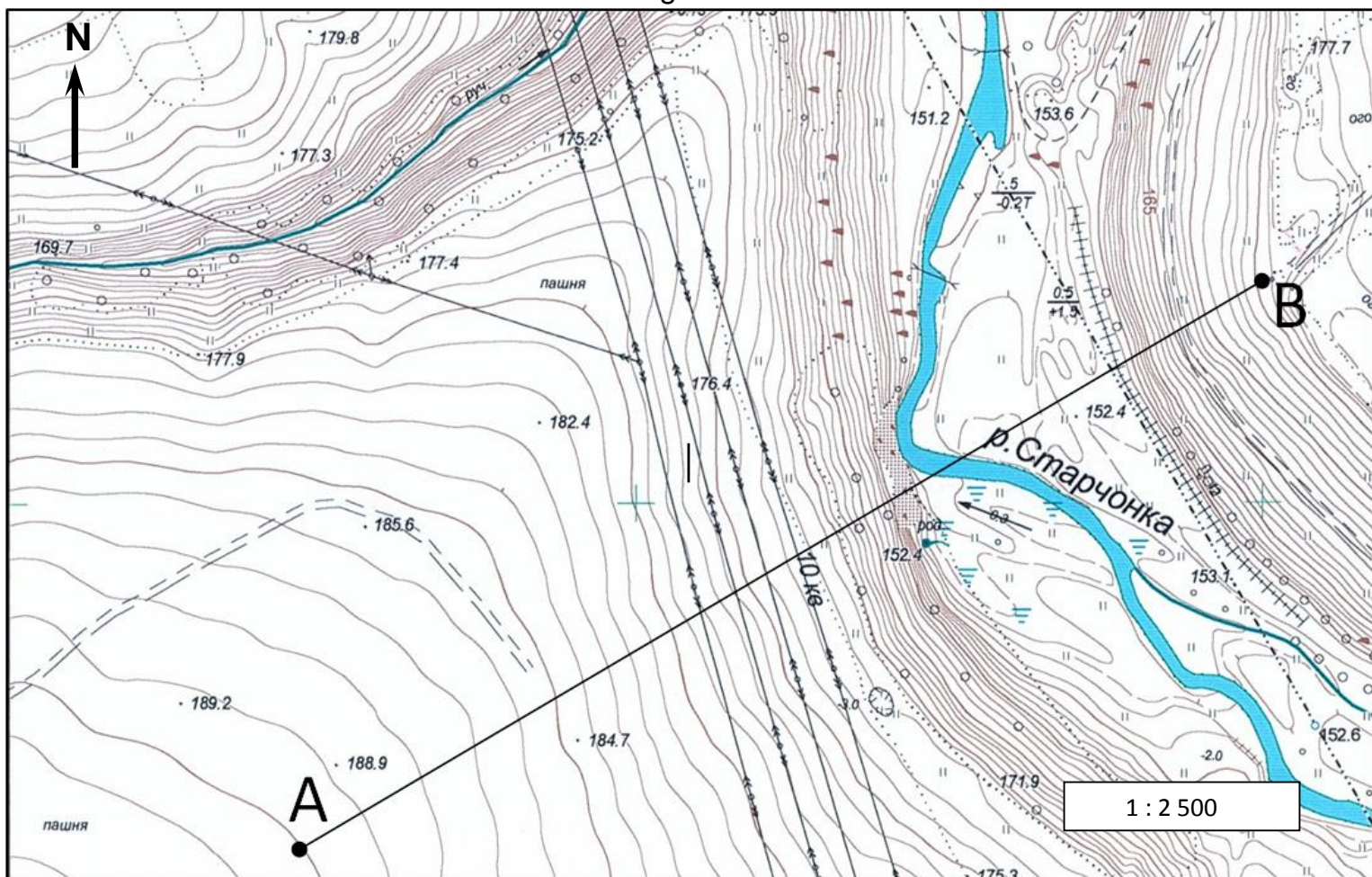
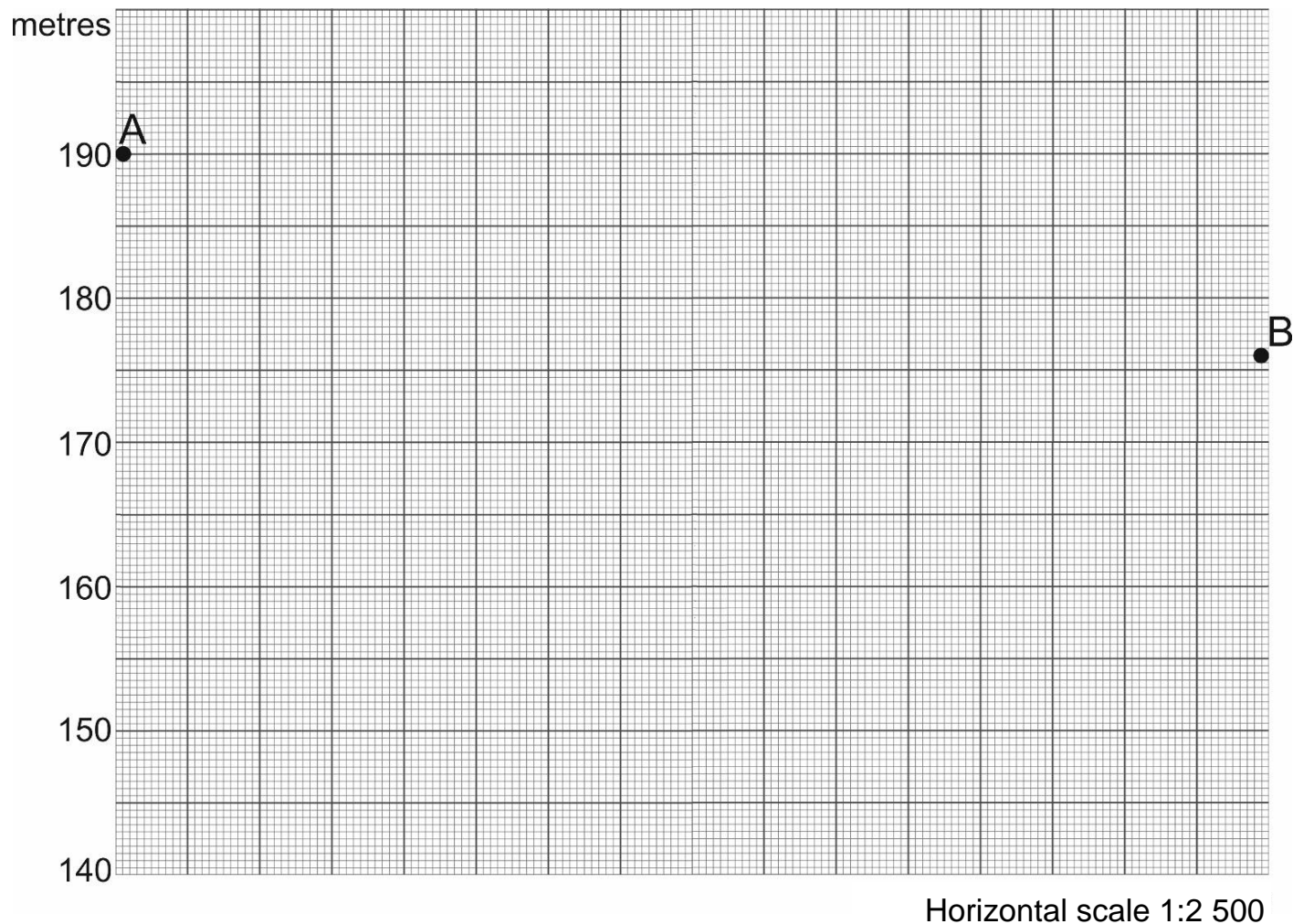


Table 1. Drilling data from site A

Layers (from surface downwards)	Layer thickness, metres
soil and humus	0.3
dark-yellow clay with inclusions of boulder and pebble	4.7
dark-brown clay with inclusions of boulder and pebble	10.0
white limestone of various hardness	52.0

### 1.2.1 Cross-section diagram



1.2.2. The rock observed at the outcrop

1.2.3. What are common uses of the identified rock? What industries use this rock?  
Describe how each of them uses this rock.

Industries	Use of the rock